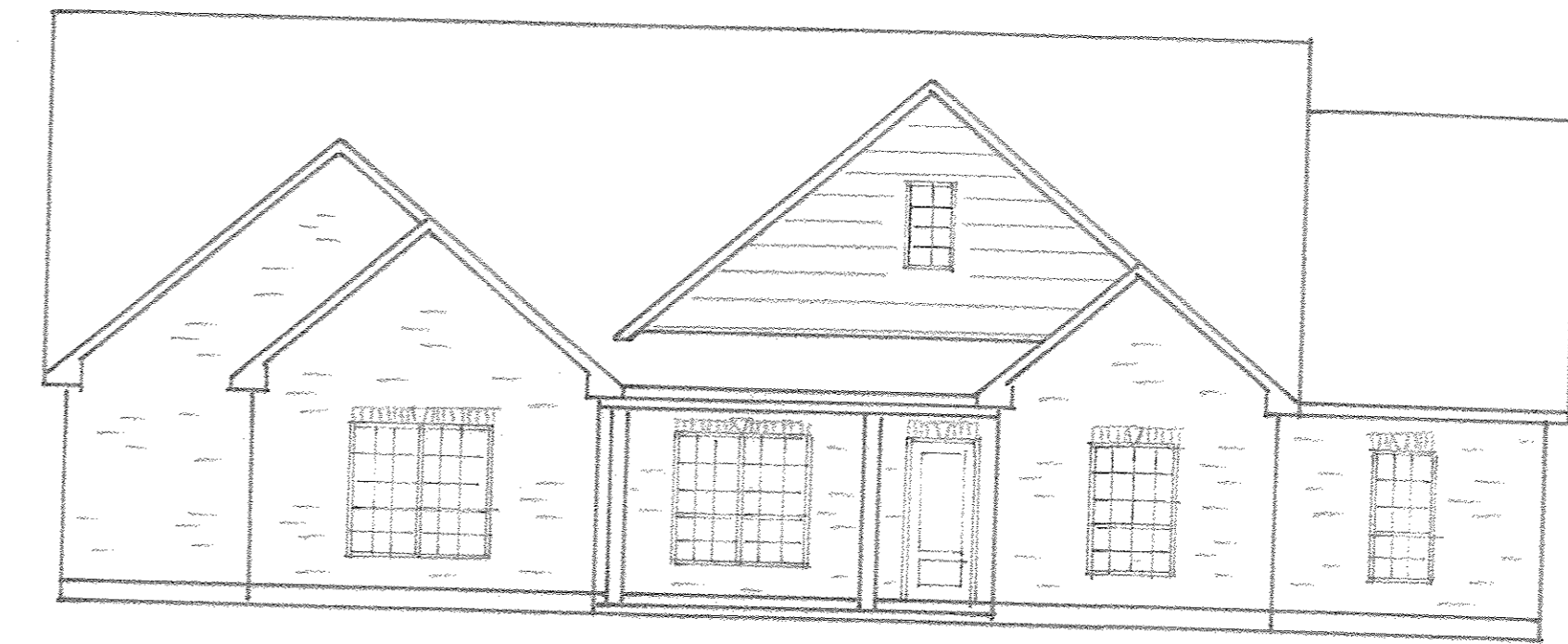


DOOR SCHEDULE				
NO.	SIZE	HT	DESCRIPTION	QTY
1	3'x6'	7/4"	FRONT ENTRY	1
2	2'x6'	"	FRENCH DOOR	1
3	3'x6'	"	STEEL DOOR	1
4	2'x6'	"	FIRE RATED DOOR	1
5	2'x6'	1 1/8"	INTERIOR DOOR	6
6	2'x6'	"	"	1
7	2'x6'	"	"	3
8	2'x6'	"	"	6
9	5'x6'	" (2-2")	"	2
10	2'x6'	"	POCKET DOOR	1

WINDOW SCHEDULE				
NO.	SIZE	HT	DESCRIPTION	QTY
A	3'x6'	9/6"	INDUL. GLASS	2
B	4'x6'	11/8"	"	1
C	3'x6'	9/6"	"	2
D	3'x5'	9/6"	"	2
E	2'x3'	9/4"	"	3
F	3'x6'	9/6"	" TRIPLE	1
G	3'x3'	9/6"	"	1
H	3'x4'	"	" TEMPERED	1
J	2'x4'	8"	" FIXED (ATTIC)	1

- Notes:
- 1) ALL 'S' PLATES EXCEPT WHERE OTHERWISE NOTED.
 - 2) STEEL LINTELS OVER APPLICABLE OPENINGS TO SUPPORT BRICK/ROCK.
 - 3) HVAC IN ATTIC.
 - 4) VERIFY ALL DIMENSIONS, NOTATIONS, AND DESIGN FOR ACCURACY BEFORE BEGINNING CONSTRUCTION.
 - 5) SQUARE FOOTAGE IS AT 2103.



FRONT ELEVATION
SCALE 1/8" = 1'-0"

THE REED RESIDENCE

SCALE: 1/4" = 1'-0" APPROVED BY: DRAWN BY: gpr

DATE: APRIL 2013 REVISIONS: PAGE 1 OF 2 DRAWING NUMBER: